

Kanaklaxmi

PRIDE
Apartment

Exclusive
2 & 3 BHK Abode

Your home is your pride, your honour.



rchitects

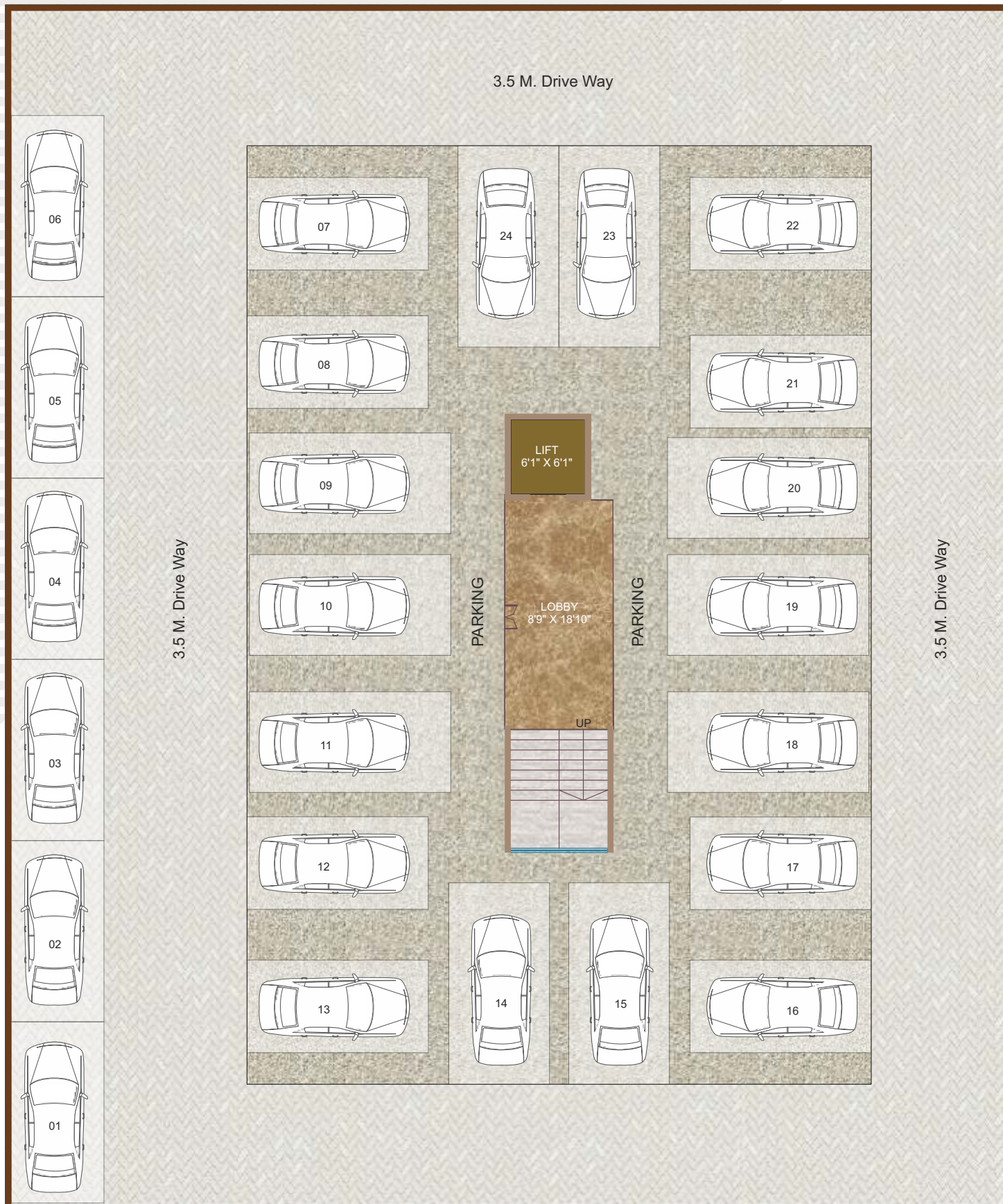
PRIDE Apartment

Pride Apartment is a 2 and 3 bedroom elegantly planned homes that have been designed keeping in mind the very personal space, functionality and value that one has come to expect from us. Located in a bustling hub of commerce, education and other residential properties. Generous windows, spacious rooms, superior amenities, artistic sensibilities plus the credibility of Kanaklaxmi Realty brings you a property that measures up to your lifestyle. A brand new line for living in every way.

Pride Apartment is also one of community and conveniences. While you live the high life and enjoy the luxury of the fine amenities, you also enjoy the close proximity to City center mall shopping complex, prestigious educational institutions and healthcare facilities. Great connectivity to the Mumbai-Agra Highway, Industrial Area and City road means you are never too far away from anywhere.

We ensure here, lifestyle dwelled into the comfort of luxury.
Come, enjoy a Pride Life...





----- 9 M WIDE PROPOSED ROAD -----



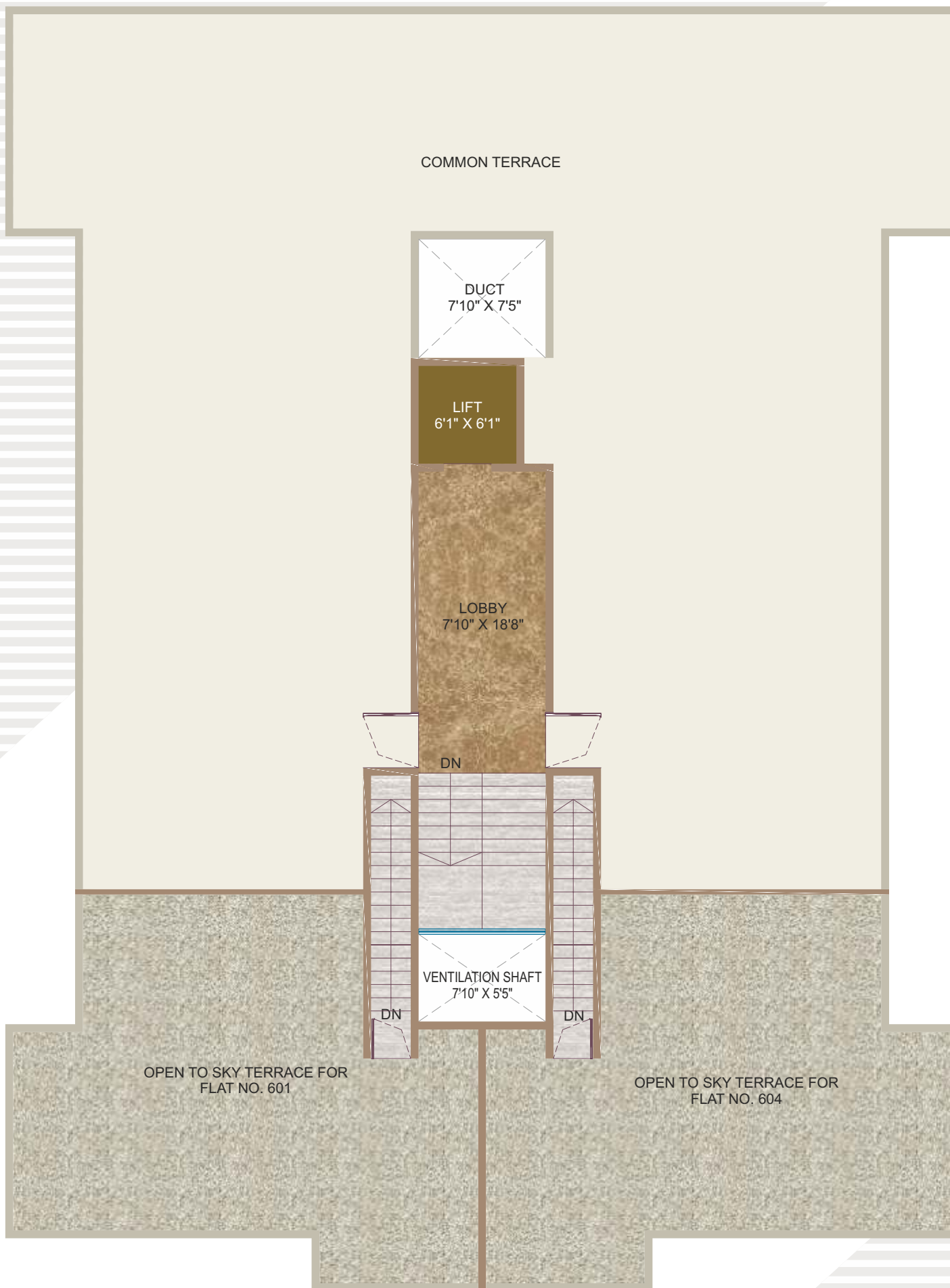
GROUND FLOOR PLAN



TYPICAL 1ST TO 5TH FLOOR PLAN



6TH FLOOR PLAN



TERRACE FLOOR PLAN

Internal as well as External AMENITIES & SPECIFICATIONS

R.C.C.

- ◆ All R.C.C. work will be done with ISI grade cement and TMT - 500 Steel.
- ◆ Frame Analysis for "Earthquake Resistant Structure" done while designing the building.

Brick Work

- ◆ External walls will be 6" thick in brick masonry.
- ◆ Internal walls will be 4" thick with R.C.C. Patli for strengthening.

Doors

- ◆ All door frames will be of plywood with both side laminates. Steel grey frames in Bathrooms.
- ◆ Moulded flush door.

Windows

- ◆ 3 track Anodised aluminium sliding windows with S. S. Mosquito Net.
- ◆ M. S. Safety grill with 12 mm round bright bars.
- ◆ Window frames will be in Steel Grey Granite.

Bathroom

- ◆ All plumbing work will be concealed type.
- ◆ A branded hot & cold-water diverter shall be provided in bathroom.
- ◆ Provision for geyser shall be done in bathroom.
- ◆ All taps will be branded of standard companies .
- ◆ Counter basin in all bathrooms

Flooring

- ◆ All rooms flooring will be 800 mm x 800 mm branded vitrified tiles.
- ◆ Bathroom flooring will be anti-skid tiles of 12" x 12".
- ◆ Glazed tiles upto Lintel level will be provided for bathroom & toilet of size 24" x 12".

Plaster

- ◆ External plaster double coat in rich cement mortar.
- ◆ Internal plaster in rich cement mortar with Gypsum finish.



Kitchen

- ◆ 8' granite kitchen otta with stainless steel shall be provided.
- ◆ Glazed tiles of size 12" x 18" upto Lintel Level will be provided in kitchen.

Paint

- ◆ External paint will be Apex, fungus resistant paint.
- ◆ Internal paint will be emulsion.
- ◆ Windows grill and railing will be oil paint.
- ◆ All paints will be in 2 coats lambi / putty and primer.

Parking

- ◆ Allotted Car parking.
- ◆ Parking will be provided with 50 mm thick paver block / Chequered Tiles.

Electrical

- ◆ Concealed electrification with telephone and cable point in hall.
- ◆ Excellent quality wiring will be provided! with branded switches.
- ◆ Branded lift with power backup system.

Miscellaneous

- ◆ Compound Wall and M. S. Gate will be provided for security.
- ◆ Brick bat coba for water proofing and heat control shall be provided on terrace with IPS Cement Flooring .
- ◆ Ample overhead and underground storage tank for water shall be provided for tlhe building.
- ◆ CCTV Cameras System for common areas .
- ◆ Common Solar Net metering on Terrace for the Common lights of the Building



PRIDE
Apartment

Site : S. No. 963, Plot No. 12, Pangare Mala, Barde Nagar, Nashik - 422009.



Kanaklaxmi Realty

303, "Hari Prabha Solitario", 3rd Floor, Thatte Nagar, Off College Road, Nasik - 5. Office : 9922524762
Website : www.kanaklaxmidewelopers.com

For more details, Call : 9823405995, 8087781231

Architect
PDP Architect

Legal Advisor
Adv. Devdatta Jaykhedkar



Maha Rera No. :P51600033498
Visit us : www.maharera.mahaonline.gov.in

Note : The Developers reserve the right to change plans, specifications and features without prior notice or obligation, at their sole discretion and subject to approval of Government authorities. Specifications, writeup, internal layouts, plans and pictures shown in this booklet are only indicative. All renderings, floor plans, pictures and maps are the artist's conceptions and not actual depictions of the building, its walls, roadways or landscaping.